



HEATING RANGE



MASTER FLASH

MADE FOR AUSSIE CONDITIONS - AUSSIE TOUGH

AZTEC HEATING RANGE



With Aztec's signature flexible design, **MasterFlash®** will meet virtually all your roof flashing needs – metal and tiled roofs, solar, heating, ceiling electrical fans – we have you covered.

Made of EPDM or silicone, **MasterFlash®** is specifically designed to resist weathering from UV rays and ozone. With a one-piece construction, installing **MasterFlash®** could not be easier.

Aztec's **MasterFlash®** range is designed by our team of engineers and manufactured under strict guidelines for quality and high performance – so it stands the test of time. We're so confident in our products that we offer a 25-year satisfaction guarantee on all installations.

Key Features include:

- We've got you covered up to a 1 mt diameter pipe
- One-piece Construction – allows for easy on-site installation
- Base Flexibility. The base is designed to form a seal on most roof profiles and roof pitches regardless of pipe location
- Perfectly designed to ensure a watertight seal
- Pipe diameters can be seen clearly for a proper pipe fit
- Ozone and UV protection
- Temperatures can be as hot as 260 degrees celsius - covering most applications.
- Available in Black, Grey and Silicone Red



CALL FOR ALL PRODUCT RANGES & SIZES

P: (03) 9768 2394 F: (03) 9768 2580

Email: orders@aztecau.com.au – www.aztecau.com.au

70 Logis Boulevard, Dandenong South VIC AUSTRALIA 3175



AZTEC

Aussie Tough. Aztec Smart.



SCAN ME



AZTEC METAL FLASH SQUARE BASE N04 AMF4B



- Features:**
- ✓ Suitable for metal roofs
 - ✓ Size Range: 70 - 175mm
 - ✓ Base Size: 280mm

AZTEC METAL FLASH #4 LOW PROFILE AMF4BLP



- Features:**
- ✓ Suitable for metal roofs
 - ✓ Size Range: 150mm opening
 - ✓ Base Size: 280mm
 - ✓ No cutting required

AZTEC METAL FLASH SQUARE BASE N06 AMF6B



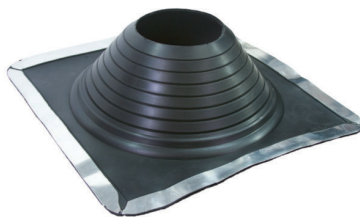
- Features:**
- ✓ Suitable for metal roofs
 - ✓ Size Range: 125 - 230mm
 - ✓ Base Size: 363mm

AZTEC METAL FLASH SQUARE BASE N07 AMF7B



- Features:**
- ✓ Suitable for metal roofs
 - ✓ Size Range: 150 - 300mm
 - ✓ Base Size: 450mm

MASTERFLASH N08X SQUARE BASE MFS8XB



- Features:**
- ✓ Suitable for metal roofs
 - ✓ Size Range: 171 - 230mm
 - ✓ Base Size: 495mm

MASTERFLASH N09X SQUARE BASE MFS9XB



- Features:**
- ✓ Suitable for metal roofs
 - ✓ Size Range: 171 - 520mm
 - ✓ Base Size: 635mm

FOR MORE ON OUR PRODUCT RANGES VISIT OUR WEBSITE

CALL FOR ALL PRODUCT RANGES & SIZES

P: (03) 9768 2394 F: (03) 9768 2580

Email: orders@aztecau.com.au – www.aztecau.com.au

70 Logis Boulevard, Dandenong South VIC AUSTRALIA 3175

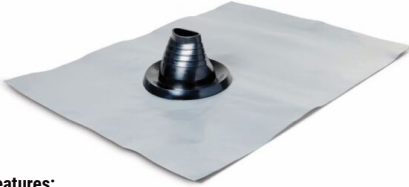


Aussie Tough. Aztec Smart.



TILEFLASH LEAD BASE NO3 VERTICAL BOOT

TFLDV3B



Features:

- ✓ Suitable for tiled roofs
- ✓ Also available in aluminium base
- ✓ Size Range: 50 - 100mm
- ✓ Base Size: 450 x 600mm

TILEFLASH LEAD BASE NO4 VERTICAL BOOT

TFLDV4B

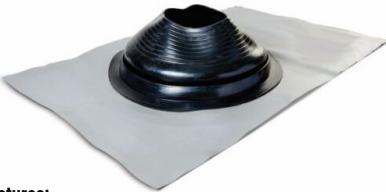


Features:

- ✓ Suitable for tiled roofs
- ✓ Also available in aluminium base
- ✓ Size Range: 50 - 170mm
- ✓ Base Size: 450 x 600mm

TILEFLASH LEAD BASE NO5 VERTICAL BOOT

TFLDV5B



Features:

- ✓ Suitable for tiled roofs
- ✓ Also available in aluminium base
- ✓ Size Range: 175 - 330mm
- ✓ Base Size: 600 x 800mm

TILEFLASH LEAD BASE NO5 VERTICAL BOOT

TFAL5B



Features:

- ✓ Suitable for tiled roofs
- ✓ Size Range: 175 - 330mm
- ✓ Base Size: 600 x 850mm

AZTEC PROFLASH NO4 ROOF COLLAR

AZTPF4B



Features:

- ✓ Suitable for tiled roofs
- ✓ Size Range: 50 - 170mm
- ✓ Base Size: 380 x 550mm

AZTEC PROFLASH NO5 ROOF COLLAR

AZTPF5B



Features:

- ✓ Suitable for tiled roofs
- ✓ Size Range: 170 - 330mm
- ✓ Base Size: 600 x 850mm

FOR MORE ON OUR PRODUCT RANGES VISIT OUR WEBSITE

CALL FOR ALL PRODUCT RANGES & SIZES

P: (03) 9768 2394 F: (03) 9768 2580

Email: orders@aztecau.com.au – www.aztecau.com.au

70 Logis Boulevard, Dandenong South VIC AUSTRALIA 3175



Aussie Tough. Aztec Smart.



**LARGER FLASHING
SIZES AVAILABLE**



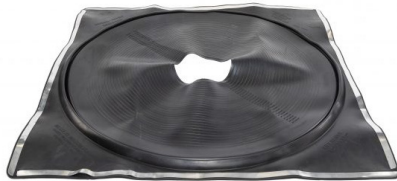
**MASTER
FLASH**

Leaders in
new and
innovative
products

**25
YEAR
WARRANTY**

**MASTERFLASH MAXI
XL SQUARE BASE**

MFSMAXIXLB



Features:

- ✓ Largest in the market
- ✓ Suitable for metal roofs
- ✓ Size Range: 254mm - 1mt

**MASTERFLASH NO2
PITCHED LEAD BASE**

MFLD2B



Features:

- ✓ Suitable for tiled roofs
- ✓ Available in pipe sizes ranging from 76 - 457mm

Temperature Resistance Chart

		EPDM	SILICONE
ADVANCED OZONE RESISTANCE tested to...		70 hour @ 500 pphm	70 hour @ 500 pphm
HIGH TEMPERATURE RESISTANCE tested to...	Intermittent	+135°C (+275°F)	+260°C (+500°F)
	Continuous	+100°C (+212°F)	+225°C (+437°F)
LOW TEMPERATURE RESISTANCE tested to...		- 55°C (-67°F)	-74°C (-101°F)
COMPRESSION SET minimum...		25%	50%

MasterFlash Features:

- ✓ Products available in Black, Grey and Silione Red
- ✓ Size Range: 0mm to 1mt available
- ✓ Complies with BAL rating requirements

Aztec is a family owned & operated, specialist manufacturer & distributor of
innovative & high quality plumbing supplies hence our tagline;

Aussie Tough. Aztec Smart.

Founders Karl & Mandi Whitten, with 30yrs+ industry know-how, started Aztec in 2010 with a vision to become a preferred supplier to the plumbing & construction industry by offering a comprehensive plumbing range - with a keen focus on customer service.

FOR MORE ON OUR PRODUCT RANGES VISIT OUR WEBSITE

CALL FOR ALL PRODUCT RANGES & SIZES

P: (03) 9768 2394 F: (03) 9768 2580

Email: orders@aztecau.com.au

Website: www.aztecau.com.au

70 Logis Boulevard,

Dandenong South VIC AUSTRALIA 3175



**AZTEC
PVC**



**MASTER
FLASH**



**AUSSIE
CONNECTORS**



**MASTER
TAPE**



**IRON
GRIP**



**PRO
FLASH**



**RAPIDVENT
QUICKSEAL**



WYSMARK



**BAL
FLASH**